



INDOFINE Chemical Company, Inc.

121 Stryker Lane, Bldg. 30, Suite 1 • Hillsborough, NJ 08844 • U.S.A.

Phone: (908) 359-6778 • FAX: (908) 359-1179

website: www.indofinechemical.com

e-mail: chemical@indofinechemical.com

CERTIFICATE OF ANALYSIS

Catalog Number: D-427

Product Name: **5,3'-DIMETHOXYFLAVONE**

Lot Number: 0405116

Chemical Formula: C₁₇H₁₄O₄

Molecular Weight: 282.30

Melting Point: 124-127°C

Appearance: Dull white powder

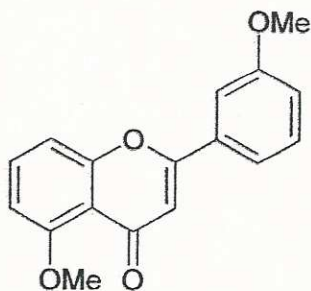
Solubility: Soluble in Chloroform

TLC: Chloroform : Methanol (9:1)

NMR Spectrum: Enclosed (Confirms to the structure)

Storage: Cool dry place

Purity HPLC): 99.85%





INDOFINE Chemical Company, Inc.

121 Stryker Lane, Bldg. 30, Suite 1 • Hillsborough, NJ 08844 • U.S.A.

Phone: (908) 359-6778 • FAX: (908) 359-1179

website: www.indofinechemical.com

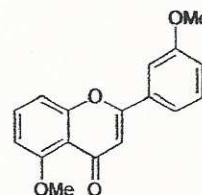
e-mail: chemical@indofinechemical.com

HPLC ANALYSIS

Acquired by : Sanjeev
Sample Name : 5,3'-Dimethoxyflavone
Sample ID : Lot No:- 0405116
Injection Volume : 20 uL
Data Filename : 010413G.lcd
Method Filename : Linear Gradient.M.lcm

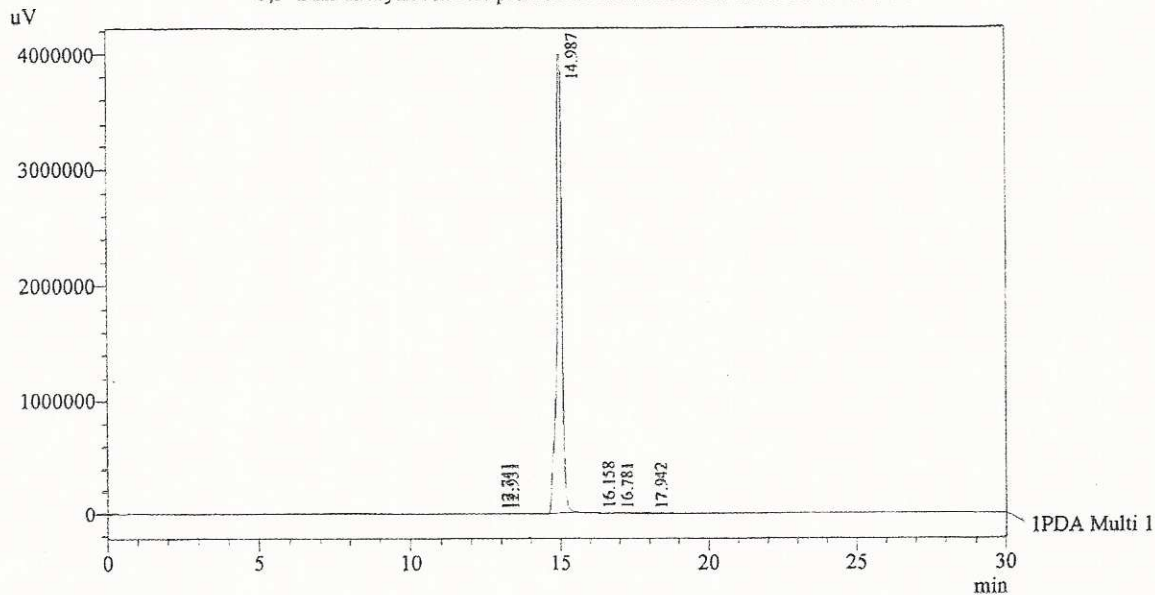
Catalog No.: D-427
Product name: 5,3'-Dimethoxyflavone
Lot No.: 0405116

Column : LUNA C-18(2), (250mm x4.6mm 5.0μ)
Flow : 1.000 mL/min.
Mobile Phase : A(0.05% TFA in water) B(Acetonitrile)
0.01 90 10
12.0 10 90
20.0 10 90
23.0 90 10
30.0 90 10



Chromatogram

5,3'-Dimethoxyflavone D:\promonence\Data\2013\APR-2013\010413G.lcd



1 PDA Multi 1 / 254nm 4nm

PeakTable

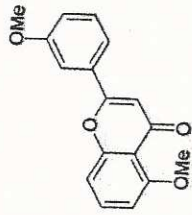
PDA Ch1 254nm 4nm

Peak#	Name	Ret. Time	Area	Area %	Relative Retention Time
1	RT:12.741	12.741	5453	0.01	0.85
2	RT:12.931	12.931	7970	0.02	0.86
3	5,3'-Dimethoxyflavone	14.987	51824605	99.85	1.00
4	RT:16.158	16.158	33393	0.06	1.08
5	RT:16.781	16.781	7872	0.02	1.12
6	RT:17.942	17.942	21295	0.04	1.20
Total			51900588	100.00	



INDOFINE Chemical Company, Inc.
 121 STRYKER LANE
 BLDG. 30, SUITE 1
 HILLSBOROUGH, NJ 08844

Catalog No.: D-427
 Product name: 5,3'-Dimethoxyflavone
 Lot No.: 0405116



1H IN CDCL3
 AVANCE-600

SOLVENT CDCL3 8
 NS 0
 DS 0
 SWH 9803.922 Hz
 FIDRES 0.326819 Hz
 AQ 1.5299480 sec
 RG 1150
 DW 51.000 usec
 DE 6.00 usec
 TE 298.1 K
 D1 1.5000000 sec
 TD0 1

===== CHANNEL f1 =====
 NUC1 1H
 P1 8.30 usec
 PL1 -1.00 dB
 P1LW 15.17893314 W
 SFO1 600.3345228 MHz
 SI 32768
 SF 600.3300116 MHz
 WDW EM
 SSB 0
 LB 0.30 Hz
 GB 0
 PC 1.00

